



# PLAN

DESIGN LEONARDI MARINELLI

## DIMENSIONI / DIMENSIONS

<b>28DR30</b>	<i>sx/dx - th/rh</i>	↔ cm 44,9 ↗ cm 43,3 ↓ cm 23,3 / 25
<b>28DR50</b>	<i>sx/dx - th/rh</i>	↔ cm 58,3 ↗ cm 43,3 ↓ cm 23,3 / 25

**COMODINO A 1 CASSETTO**  
1 DRAWER NIGHTSTAND



<b>28DR40</b>	<i>sx/dx - th/rh</i>	↔ cm 44,9 ↗ cm 43,3 ↓ cm 44,2
<b>28DR60</b>	<i>sx/dx - th/rh</i>	↔ cm 58,3 ↗ cm 43,3 ↓ cm 44,2

**COMODINO A 2 CASSETTI**  
2 DRAWERS NIGHTSTAND



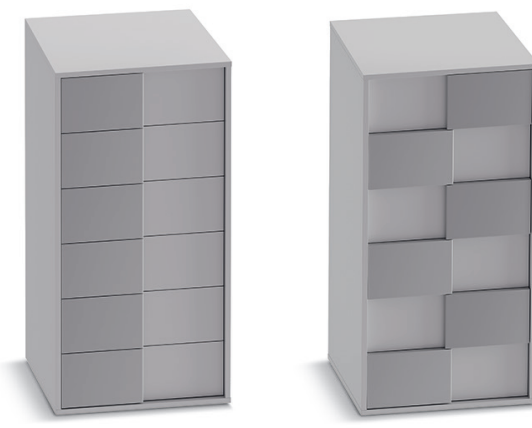
<b>28DR45</b>	↔ cm 44,9 ↗ cm 43,3 ↓ cm 44,2
<b>28DR65</b>	↔ cm 58,3 ↗ cm 43,3 ↓ cm 44,2

**COMODINO A 2 CASSETTI**  
2 DRAWERS NIGHTSTAND



<b>28SR60</b>	<i>sx/dx - th/rh</i>	<b>28SR65</b>	↔ cm 58,3 ↗ cm 52 ↓ cm 121
---------------	----------------------	---------------	----------------------------

**SETTIMANALE**  
SEVEN DAYS



<b>28CR10</b>	<b>28CR15</b>	↔ cm 127,1 ↗ cm 52 ↓ cm 82,6
---------------	---------------	------------------------------

**COMÒ**  
DRESSER



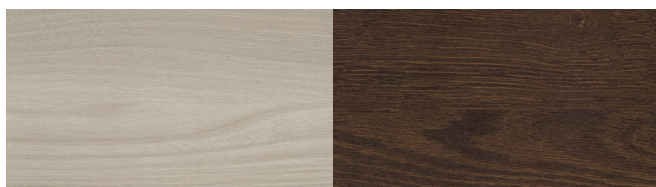
## NOBILITATI COATINGS



**MATERICO BIANCO**  
WHITE TACTILE

**MATERICO LACCATO OPACO (LACCATI MERCANTINI E LACCATI RAL)**  
MATT TACTILE LACQUERED FINISH (MERCANTINI LACQUERS AND RAL LACQUERS)

## NOBILITATI PORO A REGISTRO REGISTER PORE COATINGS



**OLMO CHIARO**  
LIGHT ELM

**ROVERE FIAMMATO**  
FLAMED OAK

## LACCATI LACQUERS



**LACCATI RAL LUCIDI/OPACHI**  
RAL LACQUERS GLOSSY/ MATT



**LACCATI MERCANTINI LUCIDI/OPACHI/GOFFRATI**  
MERCANTINI LACQUERS GLOSSY/MATT/EMBOSSSED

Per conoscere la gamma completa dei colori  
consulta la cartella Laccati Mercantini.  
To see the full range of colours  
see the Mercantini Lacquer chart.

**SOLO PER I FRONTALI**  
ONLY FOR FRONT PANEL

**FINITURE RIPORTI FRONTALI**  
FRONT TRIM FINISHES

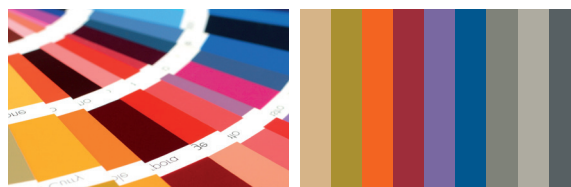
## DECORATIVI DECORATIVE EFFECTS



**EFFETTO CEMENTO**  
CEMENT EFFECT

**EFFETTO RUGGINE**  
RUST EFFECT

## LACCATI LACQUERS



**LACCATI RAL OPACHI**  
RAL LACQUERS MATT

**LACCATI MERCANTINI  
OPACHI/GOFFRATI**  
MERCANTINI LACQUERS  
MATT/EMBOSSSED